



BUILDING & HARDWARE DISTRIBUTOR IN AUSTRALIA

- (+61) 45 983 1963
 - 86A Southern Cross Circle, Ocean Reef
 - Perth Western Australia
- info@bhdaustralia.com

WWW.BHDAUSTRALIA.COM





SUN AND UV PROTECTION



MANUAL OR ELECTRIC OPERATION



INSECT CONTROL



Zip Track Outdoor Roller Blind

1. Function:

① Reduces glare. ② Keeps away insects. ③ Blocks out rain and wind. ④ Anti UV. ⑤ Protects outdoor furniture.

2. System:

- ① Manual crank system
- ② Spring system
- ③ Electric motorized system

3. Motor & control method:

- ① Motor power: 110 V / 60 Hz, 230V/50Hz
- ② Motor Brand: A-OK, DOOYA, Somfy (only 230V)
- ③ Control method: remote control (individual controlled or multi controlled), sensor control and app control

4. Fabric

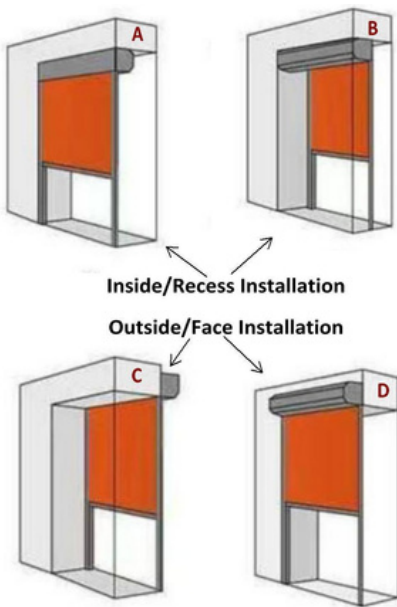
- ① Blackou fabric: 0% openness
- ② Translucent fabric: 1%, 3%, 5%, 10%, 20%, 30%
- ③ Transparent fabric: TPU materials (fabric width:1.37m)

5. Product Model

- ① V6-106 & V6-118
- ② V7-100 & V7-110 & V7-120
- ③ V8-100 & V8-120 & V8-140

How to custom made your blind?

Step 1: Confirm installation method and measure the blind size

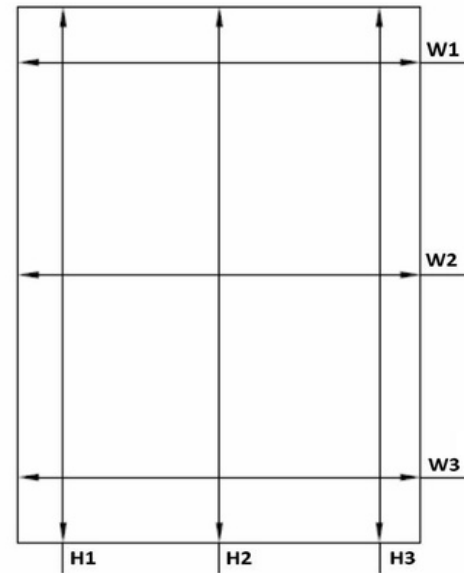


For inside/recess installation

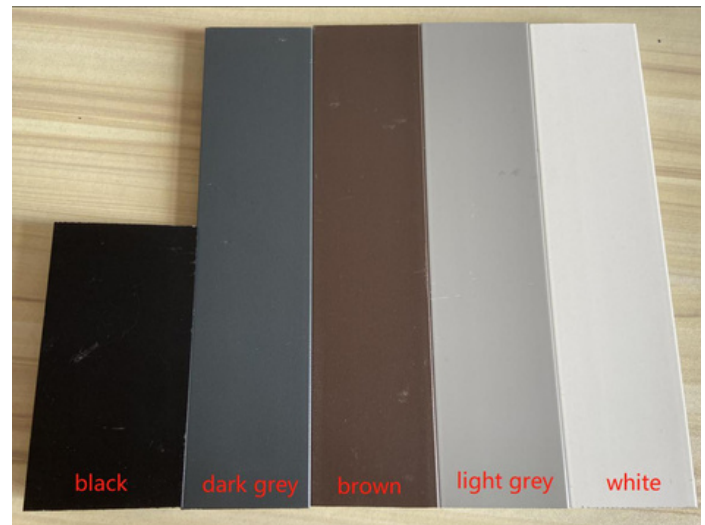
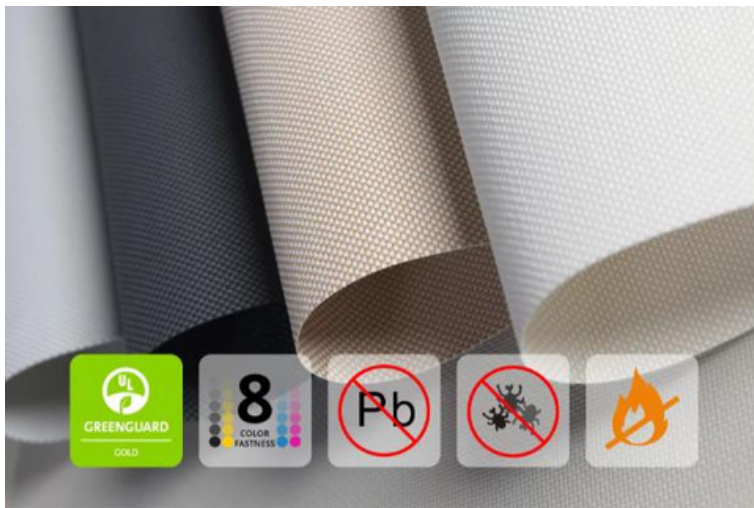
"Width: top, middle, and bottom three points measure width, take the minimum size minus 5 mm for product width,
That is, $W = \min(W1, W2, W3) - 5\text{mm}$;
Height: top, middle, and bottom three points measuring height, take the minimum size of 2mm for product height,
That is, $H = \min(H1, H2, H3) - 5\text{mm}$;
Measurement tolerances shall not exceed $+1/-2\text{mm}$."

For outside/face installation

$W = \text{Max}(W1, W2, W3) + \text{side track width}$
 $H = \text{Max}(H1, H2, H3) + \text{cover height} + \text{bottom bar height}$



Step 2: Confirm fabric (color and openness) & frame



Step 3: Confirm the operate system and product model



Spring System



Manual Crank System

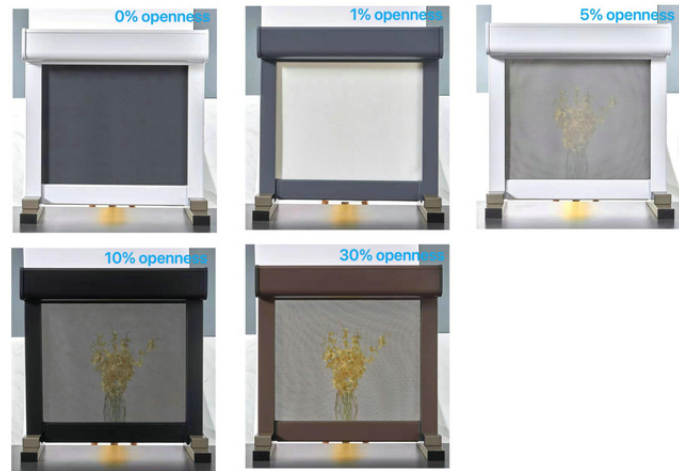


Motorized System

Translucent, Transparent Or Blackout

Strong and durable Mesh Fabric

- Our ziptrack outdoor blinds will accommodate for a variety of woven mesh fabric.
- Available in different openness: 0%, 1%, 3%, 5%, 10%, 20% and 30%.

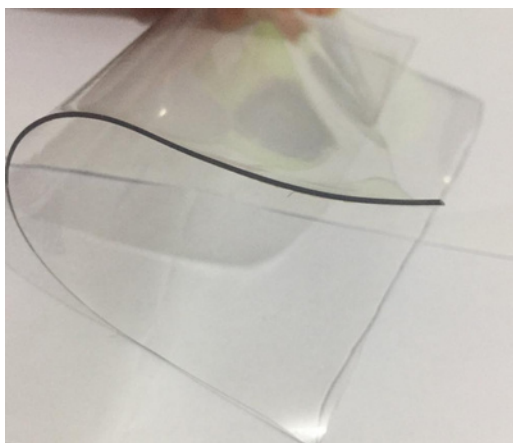


Reduces heat transmission

- 50 – 99% Wind, Rain, Sun and UV Protection
- Offers privacy but maintains the view
- Potential to reduce your cooling requirements
- The weight and weave density of the mesh will influence the level of transparency, rainproof and UV protection.

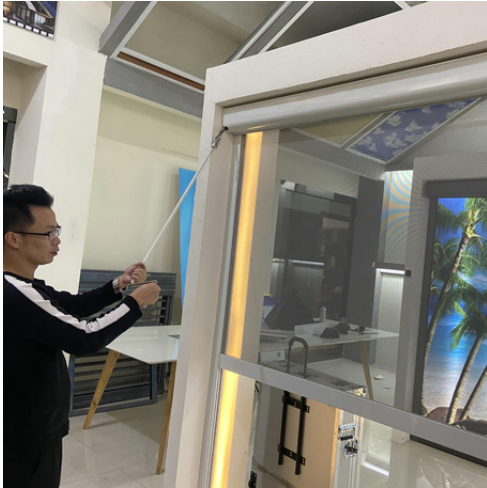
TPU for clear views

Clear TPU is a popular option for many people and businesses.



- Completely rain and wind proof
- surface High quality TPU for clear views
- beyond Perfect for maintaining warmth

Control System



Manual Crank System

Rotate the joining arm clockwise to raise or counter-clockwise to lower your outdoor blind.



Spring-Balanced System

- One-touch convenience
- Quick and easy-to-use
- Leave at any height
- Hand push



Motorized system

- Remote control
- Sensor control
- App control
- 110V or 230V electric power required

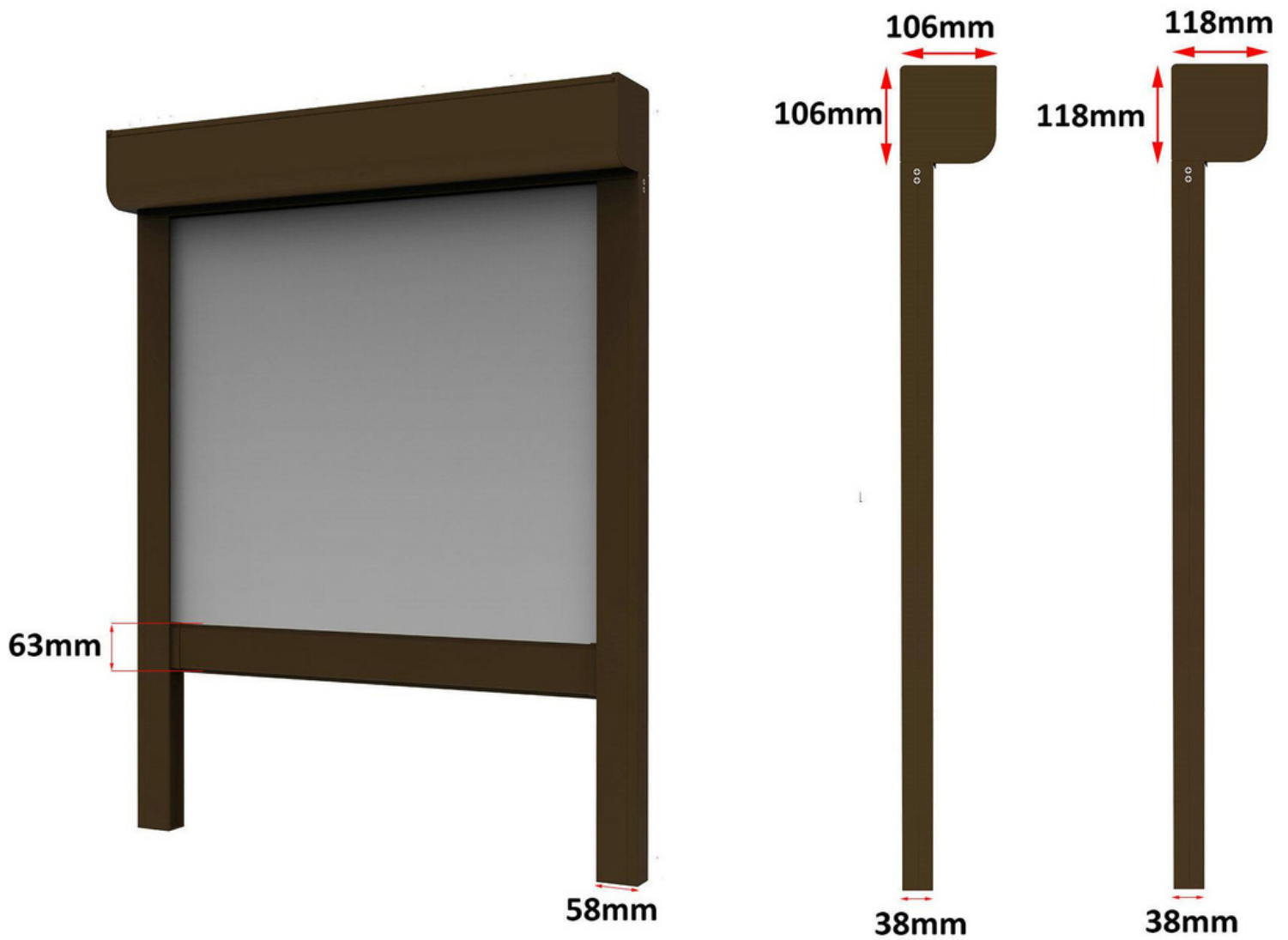


EXTERIOR
VIEW FROM OUTSIDE



INTERIOR
VIEW FROM INSIDE

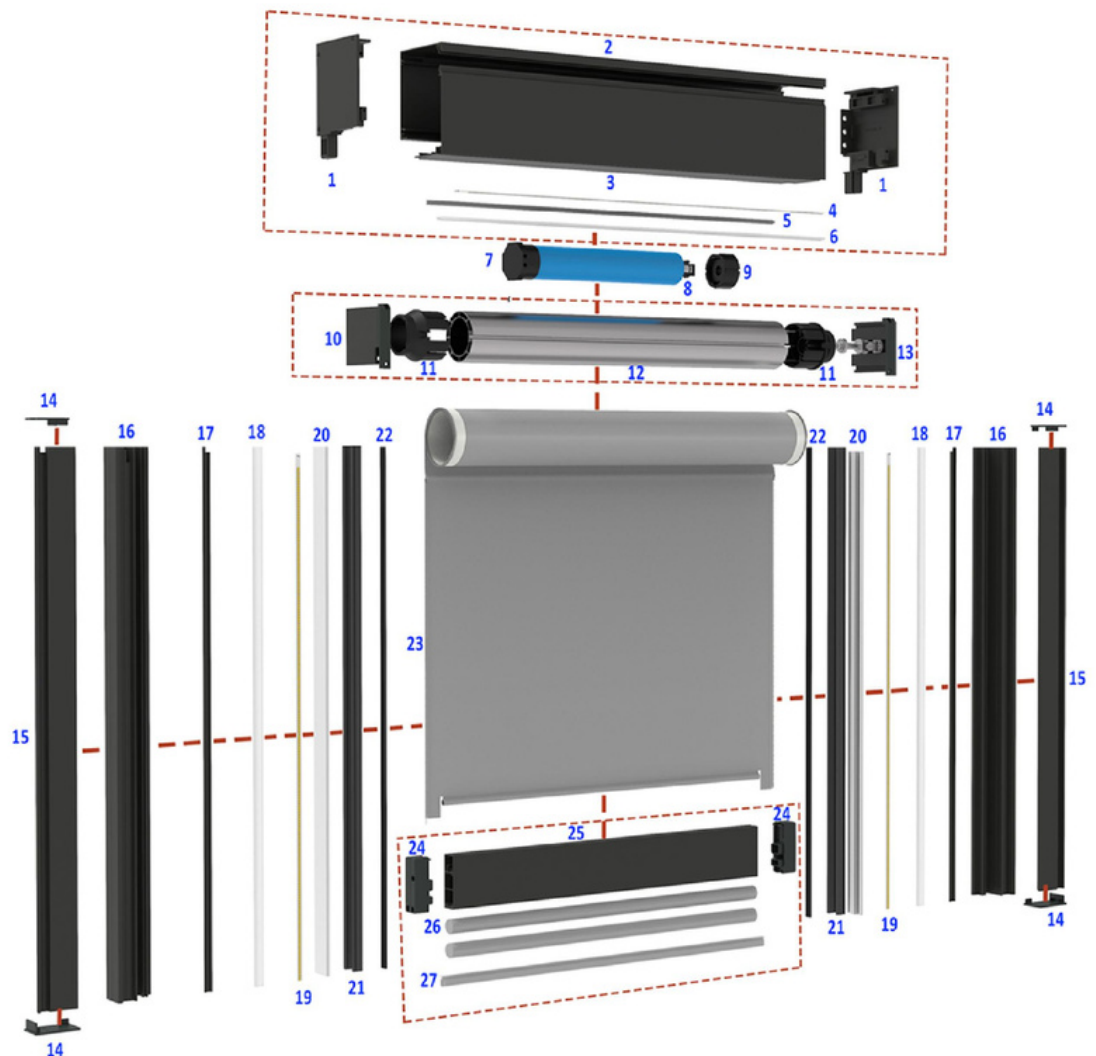
V6 Zip Track Blind



Model	available size	Frame color	cover & tube size
V6-106	W: 0.7m-3m H: 0m-3m	white, light grey, dark grey, coffee	cover: 106mm*106mm 70mm single layer tube
V6-118	W: 3m-4m H: 0m-3.5m	white, light grey, dark grey, coffee	cover: 118mm*118mm 85mm single layer tube

V7 Zip Track Blind

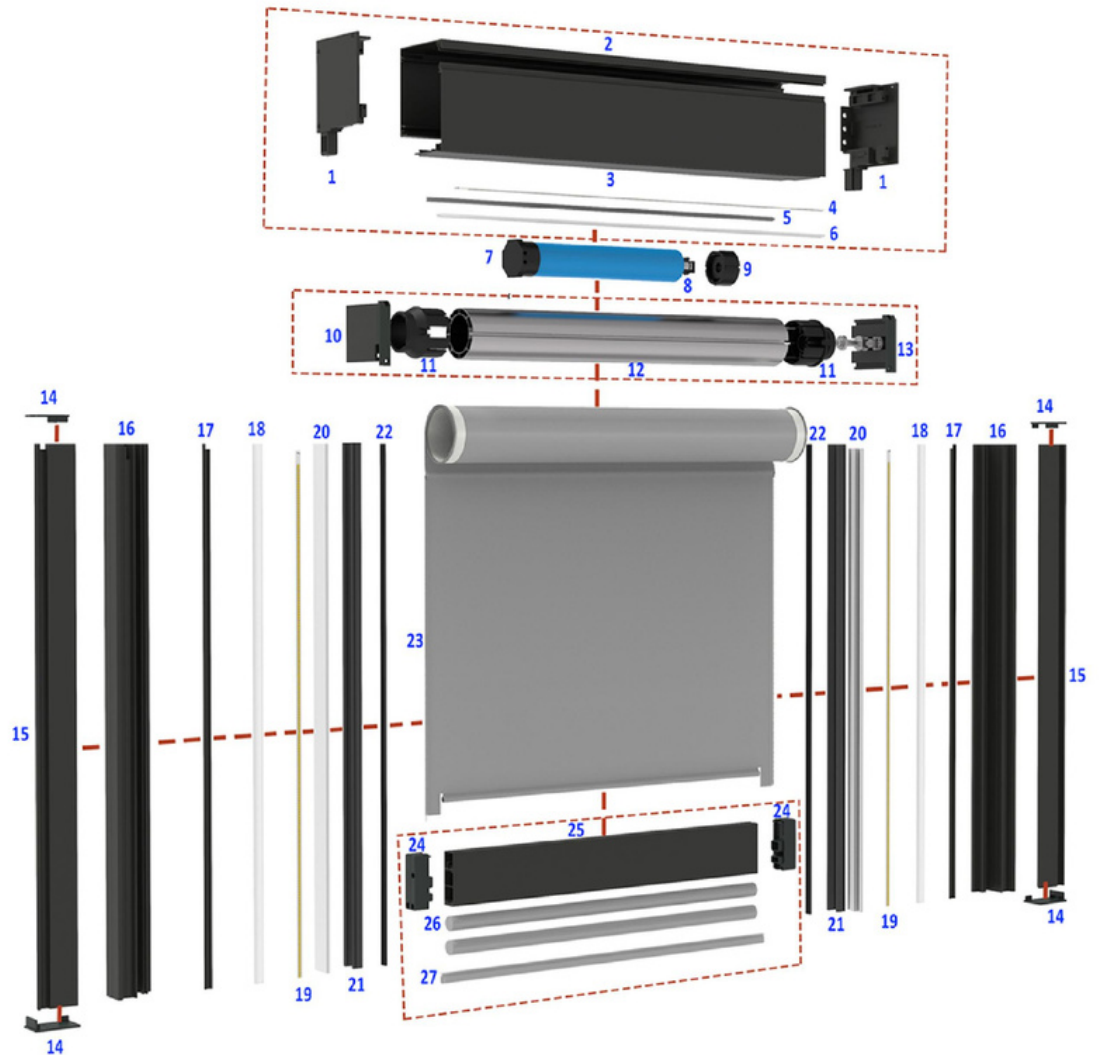
- No Part
- 1 End plate
- 2 Box back
- 3 Box cover
- 4 LED strip
- 5 Wool strip
- 6 LED strip cover
- 7 Booster
- 8 Clip
- 9 Drive wheel
- 10 Booster head adapter
- 11 Reducer
- 12 Tube
- 13 Booster tail adapter
- 14 Side rail cover
- 15 U-mounting rail
- 16 Inner rail
- 17 LED strip rail
- 18 Wool strip
- 19 LED strip
- 20 Fabric rail
- 21 Silica gel strip
- 22 Anti-wrinkling strip
- 23 Fabric
- 24 Bottom rail cover
- 25 Bottom rail
- 26 Weight bar
- 27 Anti-collision strip



Model	available size	Frame color	cover & tube size
V7.0-100W: H: 0m-3m	0.7m-3m	white, light grey, dark grey, coffee, black	cover: 100mm*110mm (could add Led light) 70mm double layer tube
V7.0-110W: H: 0m-4m	3m-5m	white, light grey, dark grey, coffee, black	cover: 110mm*120mm (could add Led light) 85mm double layer tube
V7.0-120W: H: 0m-6m	5m-6m	white, light grey, dark grey, coffee, black	cover: 110mm*120mm (can't add Led light) 95mm double layer tube

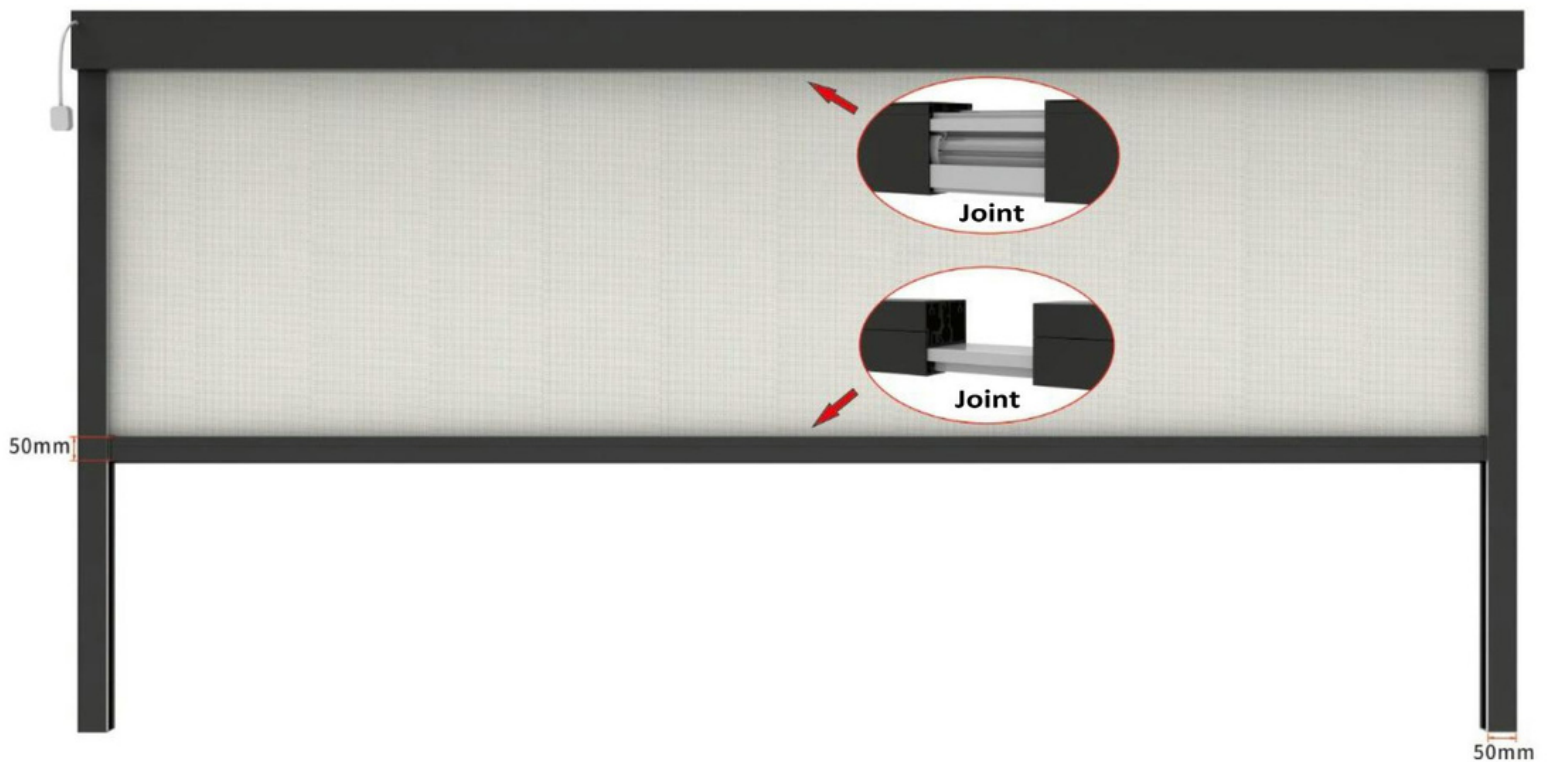
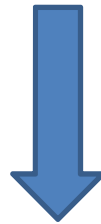
V8 Zip Track Blind

- No Part
- 1 End plate
- 2 Box back
- 3 Box cover
- 4 LED strip
- 5 Wool strip
- 6 LED strip cover
- 7 Booster
- 8 Clip
- 9 Drive wheel
- 10 Booster head adapter
- 11 Reducer
- 12 Tube
- 13 Booster tail adapter
- 14 Side rail cover
- 15 U-mounting rail
- 16 Inner rail
- 17 LED strip rail
- 18 Wool strip
- 19 LED strip
- 20 Fabric rail
- 21 Silica gel strip
- 22 Anti-wrinkling strip
- 23 Fabric
- 24 Bottom rail cover
- 25 Bottom rail
- 26 Weight bar
- 27 Anti-collision strip



Model	available size	Frame color	cover & tube size
V8.0-100W:	1-14m H: 0m-3m	dark grey	cover: 100mm*120mm (could add Led light) 70mm special tube
V8.0-120W:	1m-14m H: 3m-5m	dark grey	cover: 120mm*140mm (can't add Led light) 70mm special tube
V8.0-140W:	1m-14m H: 5m-7m	dark grey	cover: 140mm*160mm (can't add Led light) 85mm special tube

V8 Oversize Structure



Extra Services

Photo printing on fabric



Logo printing on the aluminum bottom bar